

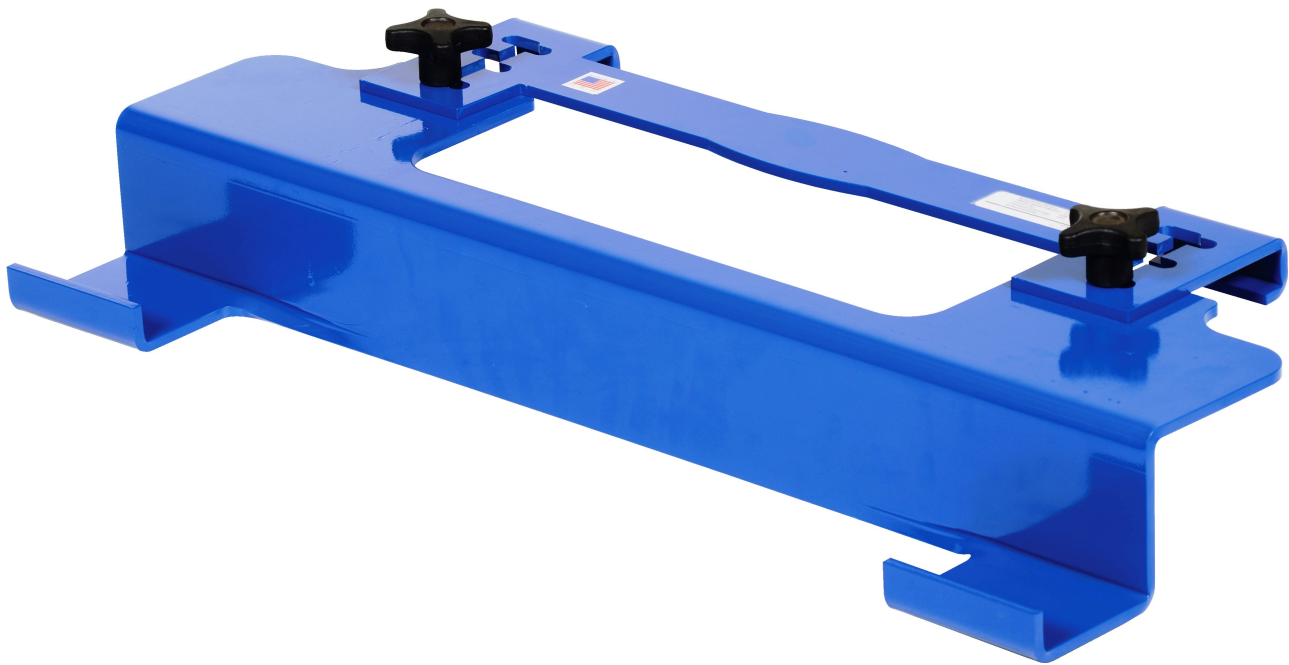
VESTIL MANUFACTURING CORP.
2999 N. Wayne St., Angola, IN 46703
Ph: 260-665-7586 · Fax: 260-665-1339
E-mail: sales@vestil.com · Website: www.vestil.com

OWNER'S MANUAL

MODEL – PJ-2001

Serial number _____

Adjustable Pallet Jockey®



INSTRUCTIONS:

1. Raise the forks on the pallet jack approximately two inches exposing wheel opening on the forks.
2. Loosen black knobs on the **Pallet Jockey®** so the slots on the crossbar can be adjusted to the appropriate setting.
3. Place hooks of the **Pallet Jockey®** into the wheel openings of the forks and adjust the slots on crossbar to the appropriate setting. (The **Pallet Jockey®** should have a maximum of 1/4" gap between the tip of forks and the **Pallet Jockey®** when properly installed).
4. Tighten black knobs and lower forks to allow **Pallet Jockey®** hooks to rest on the ground.
5. Drive pallet jack into pallet cutout's located on side runner board. *Caution: Insure that the **Pallet Jockey®** hooks are completely underneath the side runner board before raising forks. Failure to drive **Pallet Jockey®** completely under runner board may result in damage to the pallet and/or **Pallet Jockey®**.*
6. Raise forks approximately five inches and now the pallet is ready to be pushed or pulled.